



PALM VILLAS

ESTATE HOMES

CORASOL, RIVIERA MAYA





- 1 Main Access
- 2 Palm Villas Estate Homes
- 3 The Village Resort & Residences
- 4 Costa Residences & Beach Club
- 5 La Escondida
- 6 The Park
- 7 Organic Gardens
- 8 Gran Coyote Club House



A Private Residential
Enclave on the Riviera Maya



Palm Villas

ESTATE HOMES

COME HOME TO A PRIVATE OASIS ON THE MEXICAN CARIBBEAN

Part of an exclusive enclave, the Palm Villas are Riviera Maya's premier lock-and-leave ownership opportunity. Crafted by Mexico City's award-winning design firm, Sordo Madaleno, this limited collection of 35 freestanding, multi-level vacation estates represents the height of modern design in one of the world's most desirable locales.

Immersed in the region's stunning natural beauty and set along the rolling greens of Corasol's Nick Price-designed Gran Coyote golf course, the Palm Villas offer a one-of-a-kind sanctuary for individuals, couples and families of all sizes.

Select from two spacious floor plans, which offer four to five-bedrooms and versatile cubic-style layouts ranging in size from 5,450 square feet. Each design features organically inspired finishes and treetop and golf course vistas. Unmatched in privacy and style, these striking three-floor homes are designed to inspire total well-being.



Each estate also enjoys professional, year-round property management as well as coveted proximity to Corasol's range of activities, amenities and services.



OUTDOOR TERRACE



Relaxed Living, Mere Moments from Adventure

Owners of the Palm Villas enjoy effortless proximity to Corasol's numerous on-site amenities and are invited to obtain memberships to the Gran Coyote Golf Course and the 10-acre Costa Beach Club, which overlooks more than 400 feet of private white sand beach and the crystalline waters of the Caribbean Sea.

Palm Villas bring world-class Riviera Maya experiences right to your doorstep.

Estate Home A

Set across three floors, this refined residence boasts a number of spaces to connect and relax or retreat and recharge in peace. On its main floor, find a chef's kitchen, dining room, living room and a spacious outdoor terrace with a large pool, ideal for year-round relaxing and entertaining. On the second floor are bedrooms with private sitting areas, terraces and ensuite baths. The top floor houses a quiet private deck with sweeping treetop and golf course views.



Home Features

- Well-appointed spacious indoor/outdoor floor plans
- Chef's kitchen with high-end appliances
- Large windows throughout
- Breathless golf course views
- Outdoor private terrace with swimming pool

Designed with ample outdoor space for residents to revel in their lush surroundings, Estate Home A also offers several versatile interior areas ideal for quiet repose or intimate gatherings.

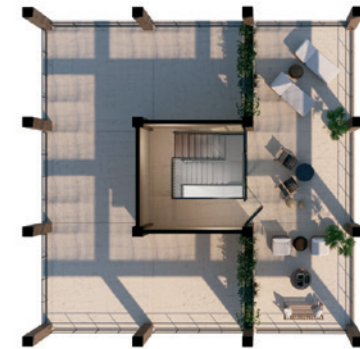
Ground Floor



First Floor



Second Floor



5 BEDROOM

6.5 BATHROOM



FIRST-FLOOR PRIMARY SUITE



SOCIAL AREA

Sunlight streams in through walls of windows, illuminating the main floor living areas and upper floor hideaways, while every spa-like bathroom is designed with inviting, earthy materials.





KITCHEN & DINING ROOM

Estate Home B

This similarly-sized three-floor layout offers an abundance of opportunities for outdoor living with second- and top-floor terraces featuring vistas of the golf course, jungle treetops and beyond. Its main floor outdoor deck is home to a pool and another spacious open-air terrace, perfect for soaking in the sun while enjoying the solace of nature.



Home Features

- Well-appointed spacious indoor/outdoor floor plans
- Chef's kitchen with high-end appliances
- Large windows throughout
- Breathless golf course views
- Outdoor private terrace with swimming pool

Reconnect with family and friends in Estate Home B's naturally bright interiors while taking in views of the tranquil pool and verdant foliage. For some extra solitude, escape to the special top-floor terrace sanctuary.

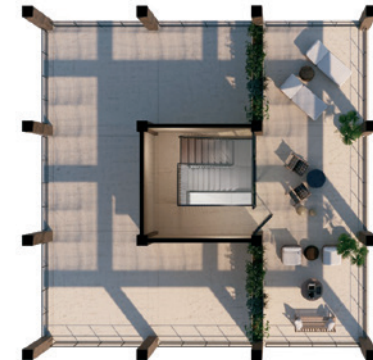
Ground Floor



First Floor



Second Floor



4 BEDROOM

4.5 BATHROOM



Enjoy thoughtful, regionally inspired design details and seamless connection with the outdoors at every turn, from the kitchen (below) to the second-floor primary suite (left and right).





SECOND-FLOOR PRIMARY SUITE

Where the Region's Wonders
Are All Within Reach



Riviera Maya

JOURNEY TO THE JEWEL OF THE MEXICAN CARIBBEAN

Riviera Maya has quickly become one of North America's most sought-after destinations. Bordered by lush jungles and white sand beaches on the Yucatan Peninsula, this enchanting paradise is also located minutes from iconic archaeological attractions dating back to the Maya civilization and UNESCO World Heritage Sites.

Nearby Attractions

Xenses Amusement Park
14 km south

Xcaret Waterfront
Eco-Archeological Park
15 km south

Cozumel Coral Reefs Monument
30 km east

Xel-Há Aquatic Theme Park
53 km south

Playa El Cielo
56 km east

Cancun Underwater
Museum of Art
60 km north

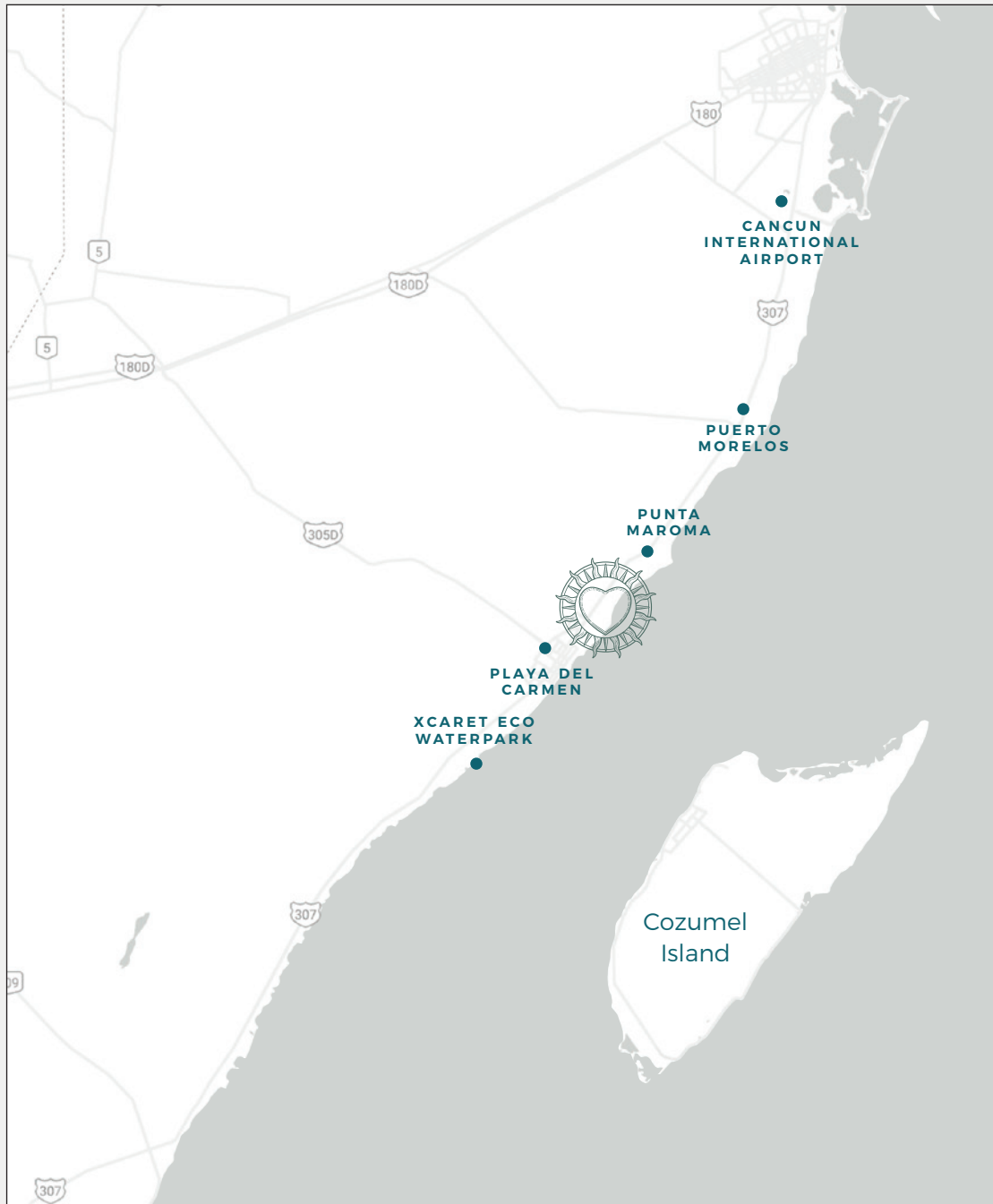
Tulum Beach, Restaurants
and Nightlife
61 km south

Tulum National Park
and Archeological Site
68 km south

Isla Mujeres Beaches
and Beach Clubs
84 km north

Ancient Pyramids of
Chichen Itza
185 km east





Getting to Corasol

While Corasol feels like a world of its own, getting here is simple. Cancun International Airport – an easy 40-minute drive from Corasol – is served by all major airlines with many offering direct flights from major U.S. cities.

Cancun International Airport
40 minutes

Coastal Resort Town Playa del Carmen
8 minutes

Xcaret Eco WaterPark
15 minutes

Tulum Beaches & Mayan Ruins
50 minutes

Cenote Chaak Tun Subterranean Caves
20 minutes

Coba Mayan Ruins
1.5 hours



corasol.mx

ventascorasol@originamx.com | +52 984 157 5556

Federal Highway 307 Cancún-Chetumal, Km 294+700
Playa del Carmen, Solidaridad, Zip Code 77710, Quintana Roo, Mexico